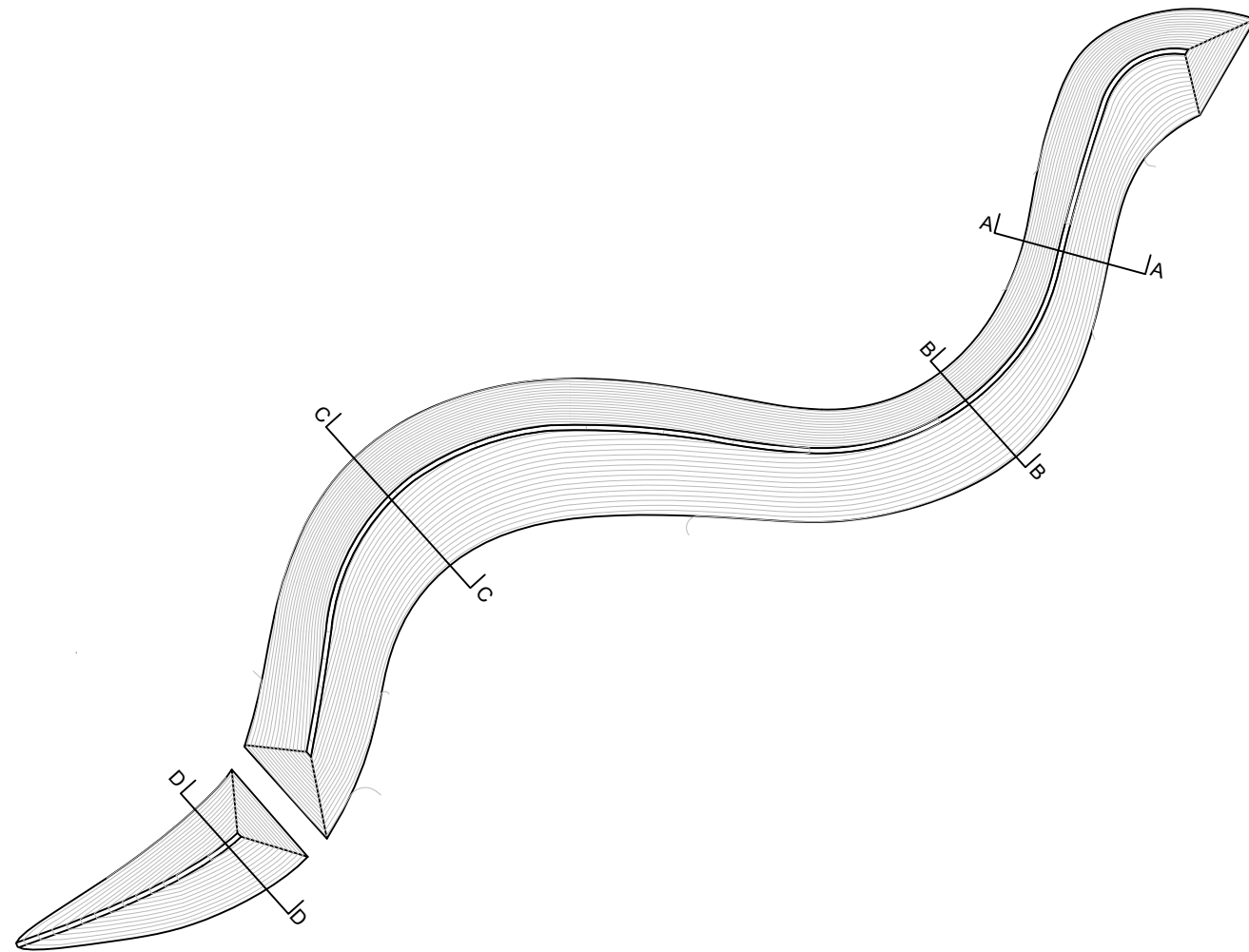


SIDE	EMNE	MÅL	DATO	REV.	REV. DATO
1	Forside, snitoversigt		2022.28.04	-	-
2	Snit A-A, B-B	1:250	2022.28.04	-	-
3	Snit C-C, D-D	1:250	2022.28.04	-	-
4	Trin på skråning, princip	1:50	2022.28.04	-	-
5					
6					

Rev.:	Dato:	Rev af:	Emne:	Godkendt:
-	-	-	-	-
-	-	-	-	-
-	-	-	-	-
-	-	-	-	-
-	-	-	-	-
-	-	-	-	-
-	-	-	-	-

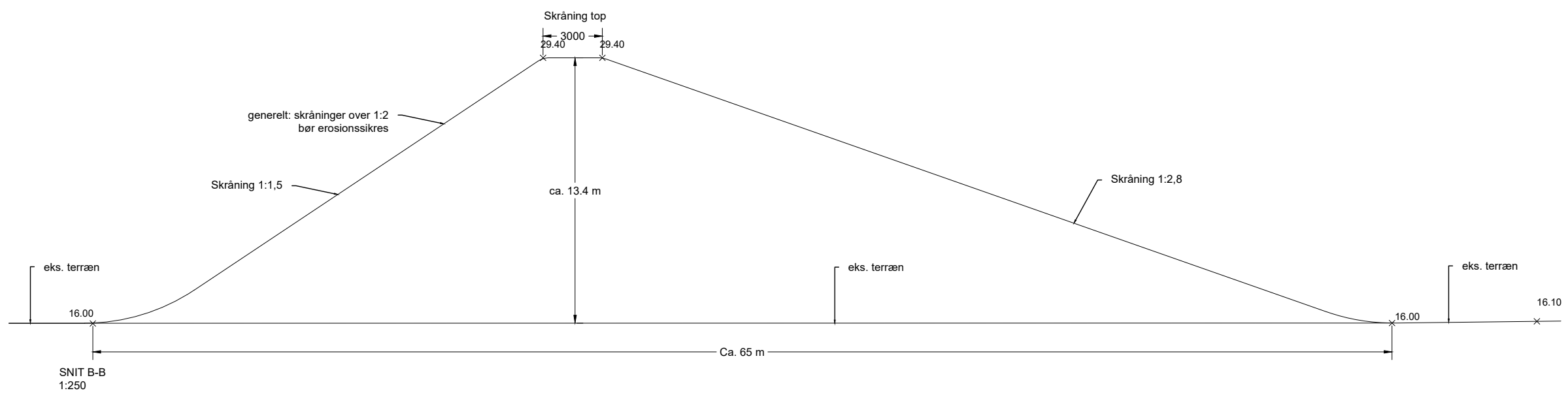
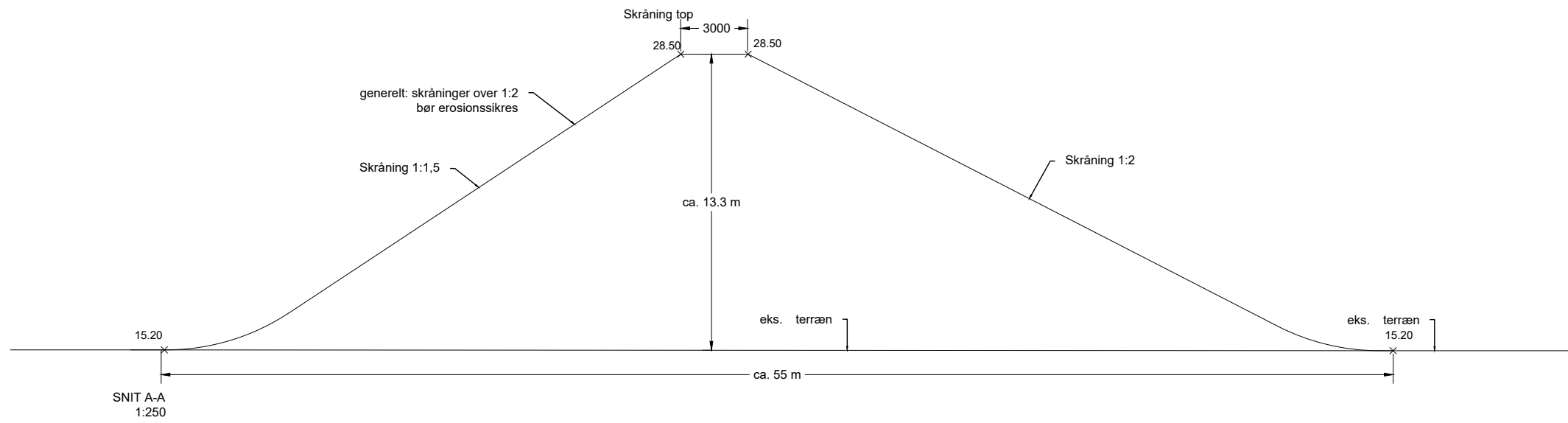


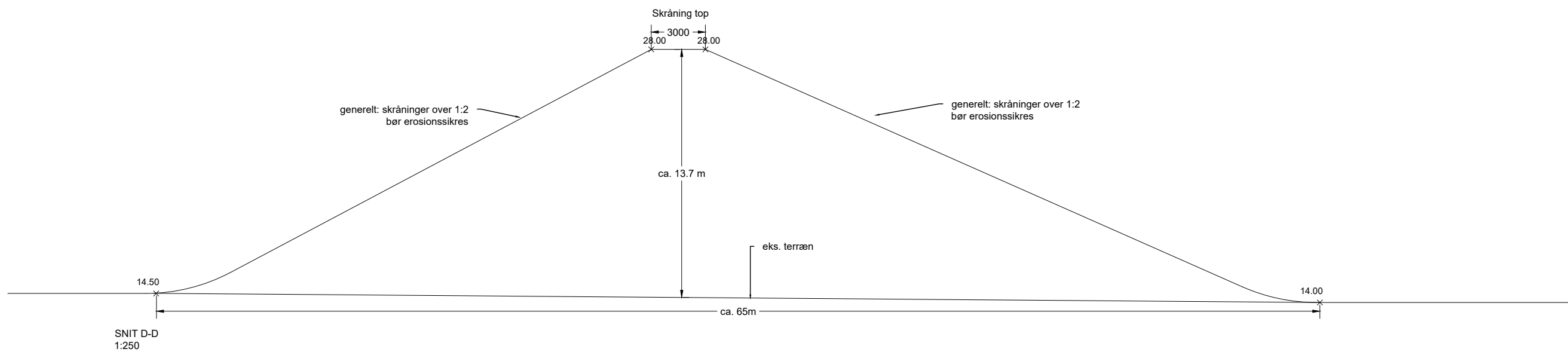
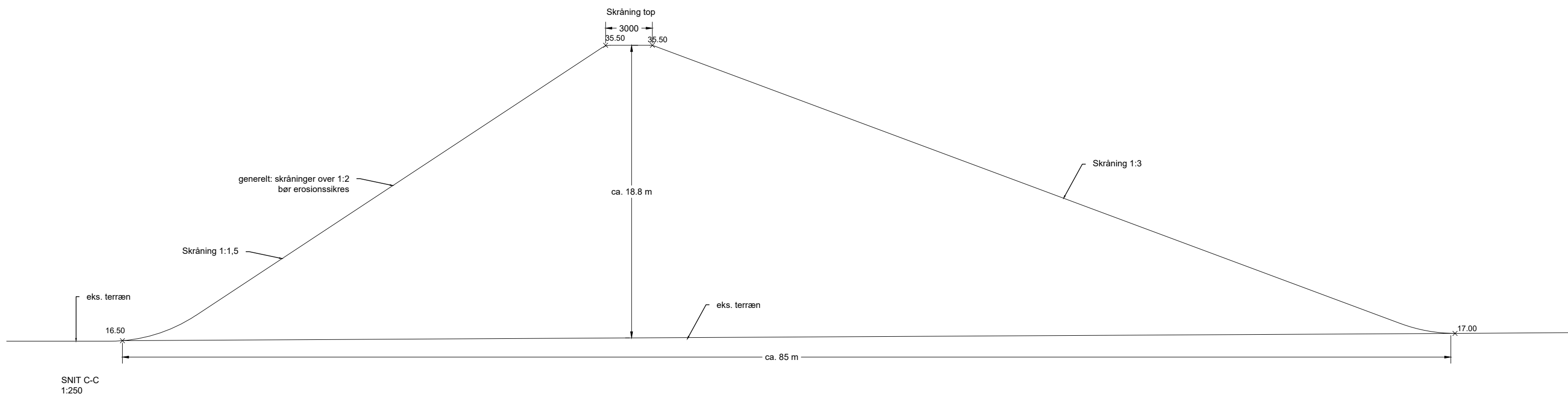
Snitoversigt

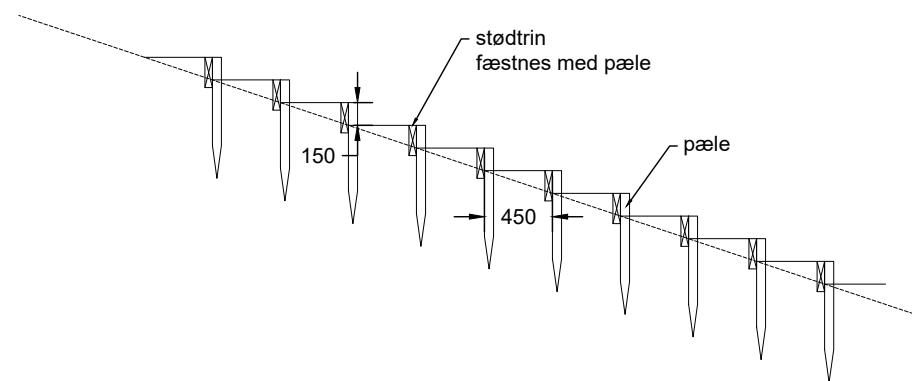
Rev.	Dato	Udarb.	Kontrol	Godkendt
-	2022.28.04	JJP	JSS	NJ
Sag	22.009	Mål	Fil	

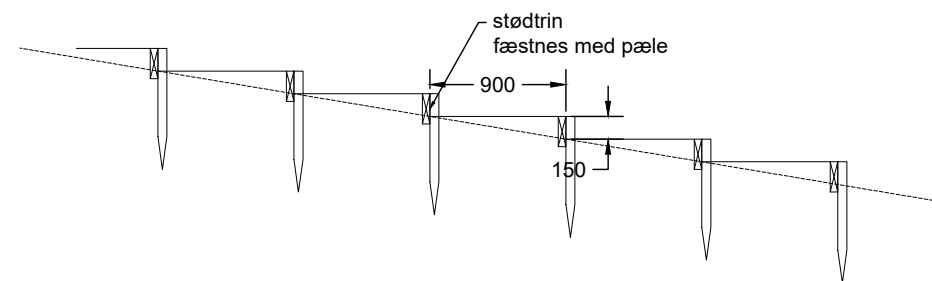
<p>Myndighedsprojekt</p> <p><b>Køge Nord</b></p> <p>Støjvold</p> <p>Snit</p>	<p><b>schonherr</b></p> <p>□ Klosterport 4T, 1. sal 8000 Aarhus C Tlf: 86 18 69 00</p> <p>■ Nørrebrogade 45E, st. 2200 København N Tlf: 33 18 61 80</p> <p>mail@schonherr.dk www.schonherr.dk</p>
<p>■ LAND. Schönherr A/S</p> <p>□ BYGHERRE. Køge Kommune Torvet 1, 4600 Køge, raadhus@koege.dk</p>	<p>Tegn.nr. <b>KN_ST_L_301</b></p> <p>Rev. -</p>







Principsnit 1:50  
trin på skråning ved hældning 1:3



Principsnit 1:50  
Trin på skråning ved hældning 1:6