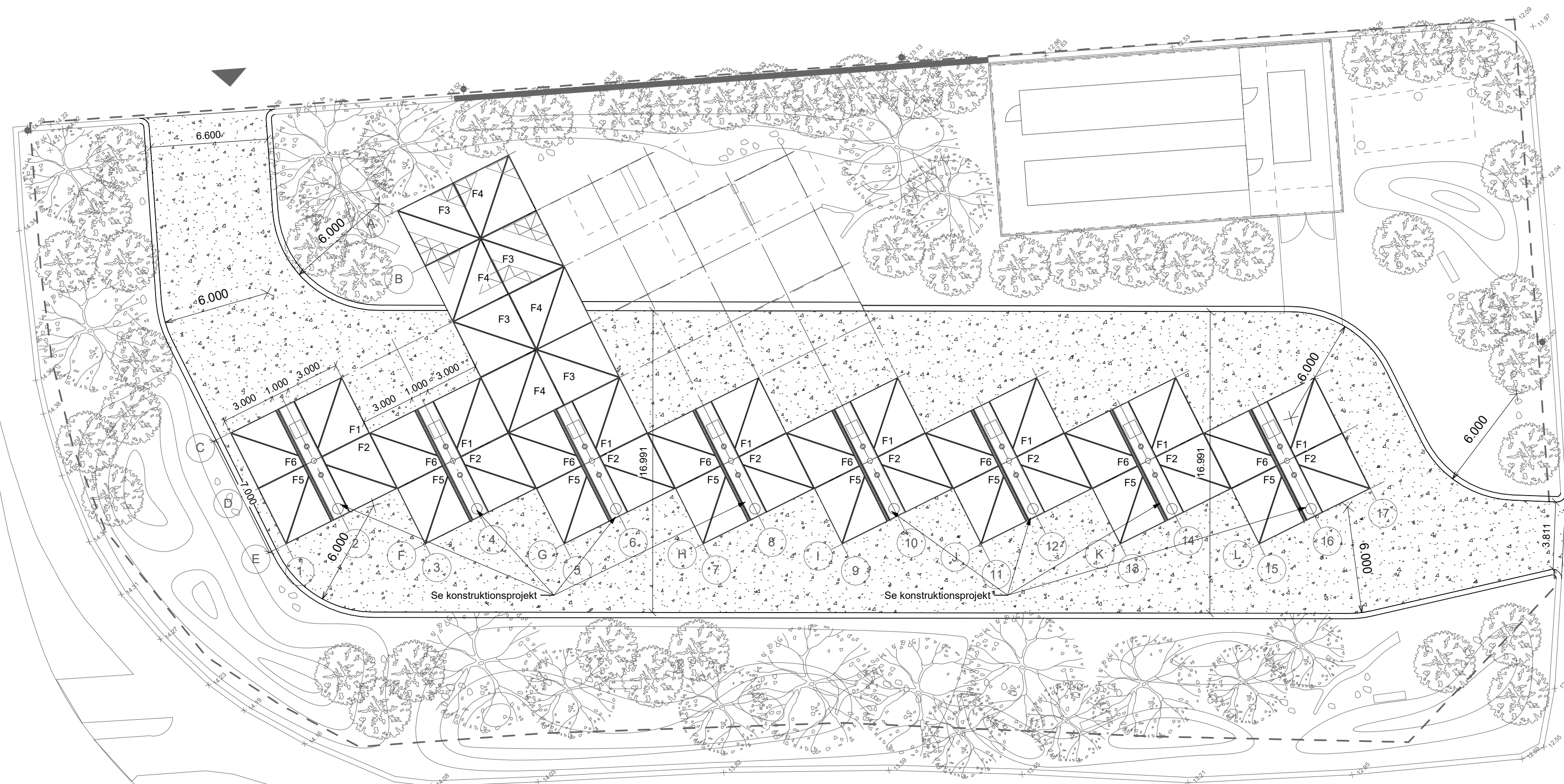

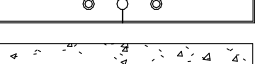
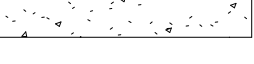


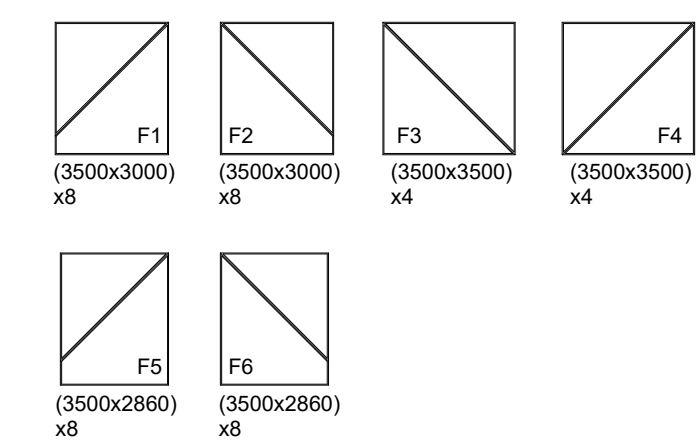
Centervej



DKKØ_K01_H1_N01

Signaturforklaring

-  Ny granit faskantsten.
-  Opkant præfabrikeret betonelement, se KON projekt.
-  Ny asfalt.



REV.: REV. BESKRIVELSE:	REV. DATO:	UDFØRT:	KONTR./GODK.:
BYGHERRE: Ultra-Fast Charging Vent. Scand. ApS	TEGN. NR.:	PROJEKT-ID:	MSS
SAGSNAVN: Clever - Gigastation Køge	DKKØ_K01_H1_N01	GODKENDT AF:	GRANSKET AF:
ADR.:	MATR.:	UDFØRT AF:	LV/MSS
EMNE: Belægningsplan		MÅL:	1 : 200
		DATO:	31-03-2021
		SAGSNUMMER:	21.003